

Isikhokelo sabazali Sokuthathwa

KOMNTWANA ESIKOLWENI

KNOW
WHAT TO
DO

EELC

EQUAL EDUCATION
LAW CENTRE

LA MANYATHELO ALANDELAYO ACHAZA NGOKWENKUKACHA IZINTO OMELE UZILANDELE XA ISICELO SOMNTWANA WAKHO SINGAMKELWANGA OKANYE SIKHATYIWE KWIZIKOLO OBUSIFAKE KUZO:

INYATHELO 1:

Akwanelanga ukuba isikolo sikuxelele nje ngomlomo ukuba isicelo sakho asamkelwanga.

Xa ungenayo into ebhaliweyo ethi asamkelwanga, cela eso sikolo esisikhabileyo isicelo sakho ukuba sikunike:

- into ebhalwe phantsi ethi asamkelwanga (le inokuba yi-imeyili evela esikolweni okanye Kwisebe Lezemfundo Lephondo okanye ifoto yesikrini eneSMS/ umyalezo owufumene esikolweni okanye Kwisebe Lezemfundo Lephondo.)
- izizathu ezibhalwe phantsi sokuba singamkelwa isicelo

Wakube ufumene into ebhalwe phantsi eqinisekisa ukuba umntwana wakho khangamelewe sisikolo unezinto eziliqela onokukhetha ukuzenza. Ezi zinto onokukhetha ukuzenza zingezantsi zingenziwa ngexesha elinye ibe akunyanzelekanga ukuba zisoloko zilandelelana ngolu hlobo lulandelayo zidweliswe ngalo:

INYATHELO 2:

Yiya kwizikolo obufake izicelo kuzo uze uzicele ukuba ziphinde ziyicinge into yokuba zingamthathanga umntwana wakho

Cela isikolo ukuba ziphinde sicinge ngezi zathu zakho zokuba kutheni umntwana wakho emele athathwe seso sikolo. Bacele ukuba bamthathe umntwana wakho. Ungabhalela ibhodi ephethe isikolo ileta enezizathu zokuba usithi mabacinge ngokumthatha. Ezinye zezizathu onokuziquka zezi:

- Isizathu sokuba usithande eso sikolo sithile (umzekelo amanye amalungu osapho ahamba isikolo khona, sinezifundo umntwana wakho afuna ukufunda zona); okanye
- chazela isikolo iinkcukacha zemeko yakho buqu nezizathu zokukhetha eso sikolo izinto ezifana nokuba izinto zokukhwela ziyafumaneka, sikufutshane nalapho uhlala khona njalo njalo.
- Ukuba abakwazi ukumthatha umntwana wakho ungabacela nokuba bafake umntwana wakho kuluhlu lwabalindileyo.

YIYA KWI-OFISI YESITHILI EFANELEKILEYO

- A.** Yiya ngeenyawo kwi-Ofisi yesithili efanelekileyo. Ungasibuza eso sikolo ukuba sikuqinisekise ukuba yeyiphi i-ofisi yesithili esiphantsi kwayo uze usicele ukuba sikunike iinkcukacha zokuqhagamshelana ezifanelekileyo. Ungazifumana iinkcukacha nedilesi yeofisi yesithili ekufutshane nawe nakwiwebhusayithi yethu ethi www.eelawcentre.org.za
- B.** Cela ukuncedwa kwi-ofisi yesithili ukuze ugcwalise **ifomu yomfundi ongenasikolo**. Wakuba uyigcwalisile le fomu umntwana wakho ufakwa kwisistimu njengomfundi ongenasikolo.

Nceda uqaphele okokuba kuneka uqiniseke ukuba uyayifota ifomu oyigcwalisileyo ukwenzela ukugcina ingxelo. Ukuba awukwazi ukuyifota, cela isithili ukuba sikunike ikopi yefomu oyigcwalisileyo.

- C.** I-ofisi yesithili imele ikucebise ngezikolo ezinendawo nokuba uthethe nezo zikolo ukuze ufake isicelo. Kuza kufuneka ukuba uye kwisikolo ngasinye kwezo zikolo.
- **Kufuneka** ugcine ingxelo yalo mhla kanye ubuye ngawo kwi-ofisi yesithili; ibe
 - **Kufuneka ubhale phantsi igama** lomntu okuncedileyo kwi-ofisi yesithili. Kubalulekile ukuba nale nkcazelo phambi kokuba ukwazi ukuya kwinyathelo 3.
 - **Ukhumbule ukuba isenguwe onoxanduva lokuba umane elandelelela izikolo obuye kuzo kwakunye ne-Ofisi yesithili efanelekileyo ukuze ubuze ngokufumaneka kwendawo.**

KUBALULEKILE UKUBA UPHATHE LA MAXWEBHU ALANDELAYO XA USIYA KWI-OFISI YESITHILI:

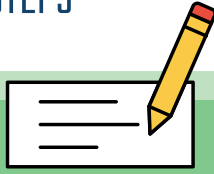
- isatifikethi sokuzalwa (esinenombolo yeID);
- izazisi zabazali;
- iripoti yomfundi;
- ikhadi lokuphuma esikolweni ukuze afune esinye, okanye iafidavithi / ingxelo enesifungo (ukuba kuyimfuneko);
- amaxwebhu okubayibhancu okanye okufuduka ngenxa yengozi; kwakunye
- nento ebhalwe phantsi yokungamkelwa evela esikolweni (ezikolweni).

Ukuba kukho naliphi na ixwebhu ongenalo kula maxwebhu, kuza kufuneka unikezele nge-afidavithi ecacisayo ukuba kutheni. (umz., isikolo ebefunda kuso umntwana asifunanga ukukunika iripoti kuba kukho iimali ezingekabhatalwa). (umz.) ukuba awunaso isatifikethi sokuzalwa somntwana wakho, ipasipoti, amaxwebhu embacu okanye okufuduka ngenxa yengozi, i-afidavithi kufuneka ibe neenkukacha zegama, indawo azalelwe kuyo, umhla azalwe ngawo neminyaka yomntwana.

Ungaya kwisikhululo samapolisa esikufuphi kuwe ukuze wenze iafidavithi.

FOLLOW THESE STEPS

1



Fumana isizathu sakungamkelwa esibhalwe phantsi kunye nezizathu esikolweni. Yazi ukuba yeyiphi i-ofisi yesithili efanelekileyo

2

Yiya ngeenyawo kwi-ofisi yesithili



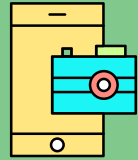
3

Cela ukugcwalisa ifomu yomfundi ongenasikolo



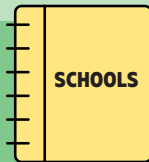
4

Yifote ifomu yomfundi ongenasikolo



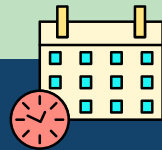
5

Cela iinkcukacha zezikolo anokuya kuzo ucele indawo



6

Bhala phantsi umhla oye ngawo kwi-ofisi yesithili, igama nefani yomntu osebenza kwi-ofisi yesithili okuncedileyo



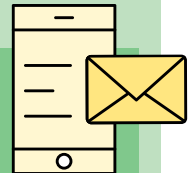
7

Yiya kwisikolo ngasinye uze ucele indawo okanye bakufake kuluhlu lwabalindileyo



8

Faka isibheni kwilungu lekhabinethi karhulumente wephondo, iMEC, kwiintsuku eziyi-10 emva kokuba uthethe nesithili



INYATHELO 3:

Ukuba awukasifumani isikolo emva **kweentsuku eziyi-10** uqale ukuthetha nesithili, umele ufake isibheno sokuthathwa kwiMEC lesebe lezemfundo lephondo elifanelekileyo.

UKUBA UNGUMZALI OHLALA KWIPHONDO LASEGAUTENG, NCEDA UQAPHELE:

ERhawutini kukho elinye inyathelo elongezelekileyo ekumele ulithathe phambi kokufaka isibheno kwiMEC. Phambi kokuba ufake isibheno sokuthathwa, kufuneka uqala ufake into ethi awuvumi kwi-ofisi yesithili efanelekileyo, zingekapheli iintsuku eziyi-7 ufumene into ekukhabayo esikolweni/ezikolweni.

Into yokungavumi kwakho kumele ibe kwifomu efanekileyo onokuyifumana ibhalwe “Annexure D” Kumthetho Wokuthathwa Esikolweni wase Gauteng. Intloko Yesebe iza kuyijonga le fomu yokungavumi.

Xa ufaka le fomu yokungavumi, qinisekisa ukuba uyabhala ukuba ulindele ukufumana impendulo kwiintsuku eziyi-7. Ukuba awuyifumananga, uza kugqiba ekubeni Intloko Yesebe ayisamkelanga isicelo sakho. Ungaqhubeka ke ubhale isibheno nokuba awuyifumananga impendulo. Ukuba ukungavumi kwakho kukhatyiwe ibe awanelisekanga, uza kuba neentsuku eziyi-7 kuzo onokubhala isibheno esiya kwiMEC. I-Annexure E Kumthetho Wokuthathwa Esikolweni waseGauteng ingasetyenziswa okanye uqhagamshelane neziko lomthetho wokulingana kwemfundo, iEELC, eza kubonisa umzekelo wokubhala ileta yokubhena.

Nceda uqaphele okuba ngokomthetho wokuthathwa esikolweni, uMEC wase Gauteng, unentsuku eziyi-15 ukuba aphenule isibheno.



The Equal Education Law Centre (EELC) uses legal advocacy, research, and litigation to advance the struggle for equal and quality education in South Africa.

www.eelawcentre.org.za



Third Floor Isivivana Centre, 8 Mzala Street, Khayelitsha, Cape Town



021 461 1421 / 0800 110 752



info@eelawcentre.org.za